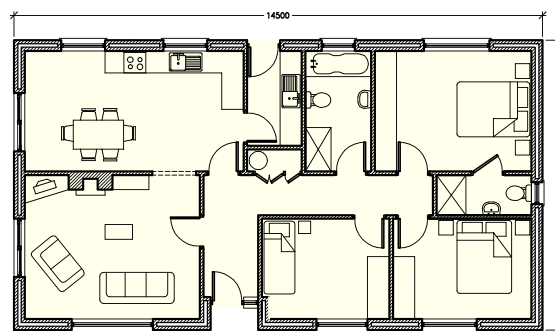


WILLOW



GROUND FLOOR

Gross External Area: 115.3 m² / 1241 ft.²

Kitchen/Dining: 6.0m x 3.3m
Living: 4.8m x 3.9m
Utility: 2.6m x 1.5m
Bathroom: 3.3m x 1.8m

Bedroom No.1: 4.3m x 3.3m
Bedroom No.2: 3.8m x 2.7m
Bedroom No.3: 3.5m x 2.7m
Ensuite: 2.6m x 1.1m

Note: While every care has been taken in the preparation of these details, we cannot be held negligent for any inaccuracies or any resulting loss or damage that may arise howsoever caused.



O'Regan's
PIKE
CONSTRUCTION LTD