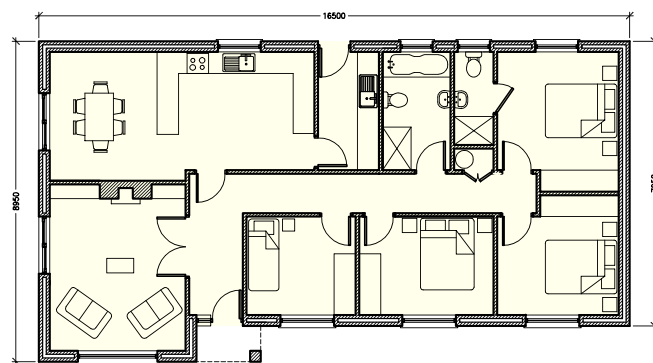


# ROSEWOOD



**GROUND FLOOR**

Gross External Area: 137.4m<sup>2</sup> / 1479 ft.<sup>2</sup>

Kitchen/Dining: 7.4m x 3.6m  
Living: 4.6m x 3.8m  
Utility: 3.3m x 1.7m  
Bathroom: 3.3m x 1.9m

Bedroom No.1: 3.4m x 3.3m  
Bedroom No.2: 3.4m x 3.3m  
Bedroom No.3: 3.7m x 2.7m  
Bedroom No.4: 3.4m x 2.7m

*Note: While every care has been taken in the preparation of these details, we cannot be held negligent for any inaccuracies or any resulting loss or damage that may arise howsoever caused.*



**O'Regan's**  
**PIKE**  
CONSTRUCTION LTD